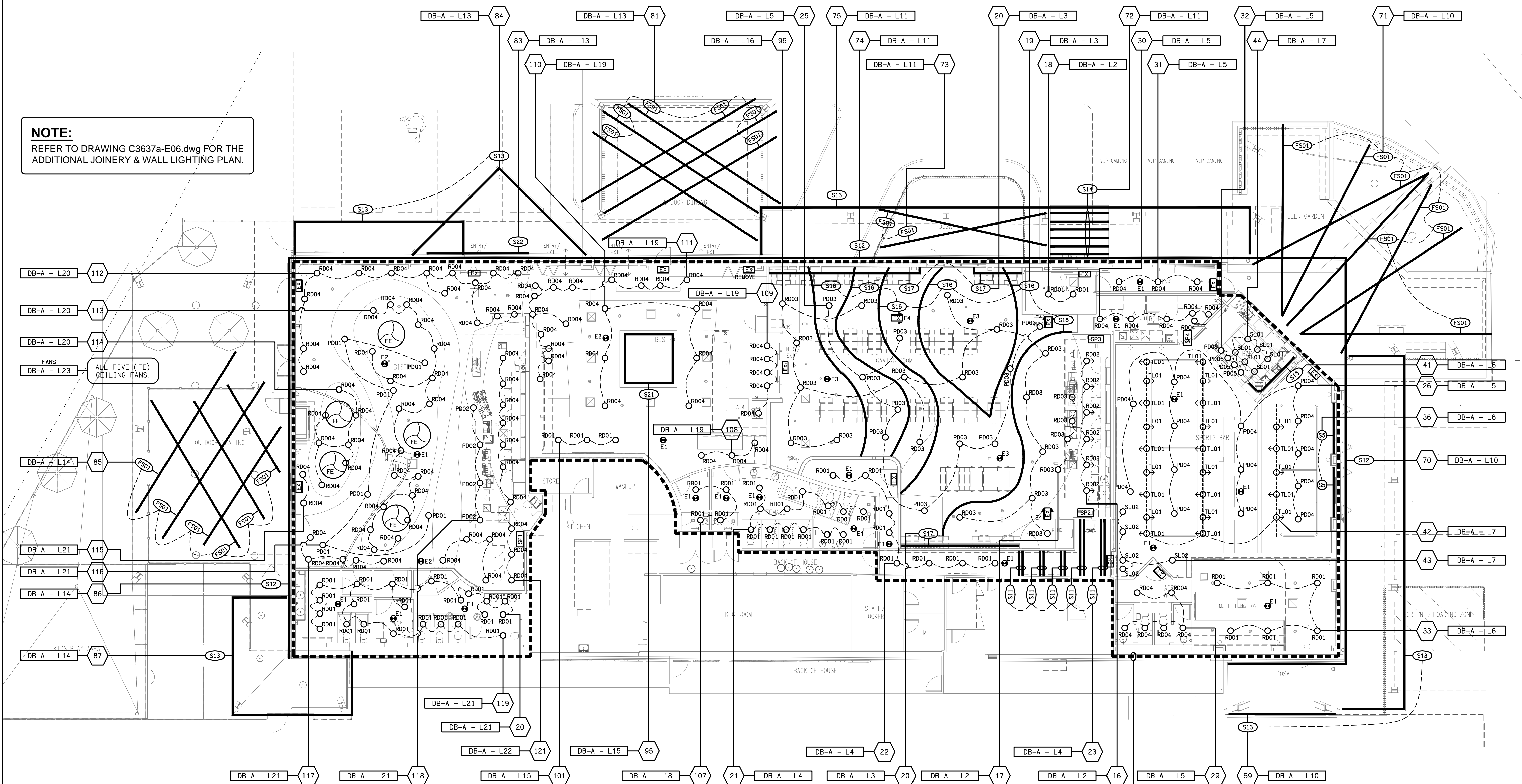


**NOTE:**  
REFER TO DRAWING C3637a-E06.dwg FOR THE  
ADDITIONAL JOINERY & WALL LIGHTING PLAN.



**ELECTRICAL CEILING SERVICES WITHIN  
THIS AREA ARE TO BE REMOVED,  
UNLESS NOTED OTHERWISE.**

A	PRELIMINARY	23/10/2025
REV:	DESCRIPTION:	DATE:
DRAWING:		
<b>ELECTRICAL SERVICES</b> <b>REFLECTED CEILING PLAN</b>		
SCALE:	PROJECT NO:	DRAWING NO:
1:100	<b>C3637a</b>	<b>E05</b>
AT A1		REVISION:
		<b>A</b>

**ELECTRICAL DESIGN GROUP BRISBANE  
PTY LTD**  
ACN 092 710 793

---

**TRADING AS:**  
**ELECTRICAL DESIGN GROUP**

THE COPYRIGHT OF THIS DRAWING  
REMAINS THE PROPERTY OF THE  
ELECTRICAL DESIGN GROUP.

---

USE FIGURED DIMENSIONS  
IN PREFERENCE TO SCALE.

---

ALL DIMENSIONS TO BE  
VERIFIED ONSITE.

# **ELECTRICAL DESIGN GROUP**

---

**ELECTRICAL**      **BUILDING**      **SERVICES**      **CONSULTANTS**

**BRISBANE**
**GOLD COAST**

P.O.Box 15, Sherwood Q.4075  
 Phone: (07) 3278 4375  
 Email: [brisbane@edg.net.au](mailto:brisbane@edg.net.au)  
 Web: [www.edg.net.au](http://www.edg.net.au)

PROJECT:  
YAMANTO TAVERN

502-510 WARWICK ROAD, YAMANTO, QUEENSLAND